

# TOTAL Control.

MULTIPLEXED . MODULAR . PROGRAMMABLE



FastLane's new CommandNET system combines all the features and power of your fire truck or ambulance electrical system, in your new response or command vehicle.

## FEATURES Include.

multiplex control = field programmable = sequence soft start = integrated flashing = complete load management  
solid state switching = dual color led indication = user changeable legends = diagnostic feedback  
downloadable updates = integrated timer function = led message display  
expandable to 320 i/o = battery run-down protection = full vehicle hour meter = fully scalable technology  
10-year proven technology = no-load chassis integration = 6-year/72,000 mile warranty



## EACH COMMANDNET SYSTEM COMES COMPLETE WITH

- (1) Front 10-Button Switch Panel
  - (1) Front Message Display
  - (30) Solid State Outputs
  - (10) OEM Interface Inputs
- Capable of controlling over 150 amps of added equipment.

## ADDITIONAL OPTIONS AVAILABLE...

6-BUTTON  
COMMAND POD



SWITCH PANEL [CN6PCP]

20 X 2 LED MESSAGE DISPLAY  
[MSG-PMC5]



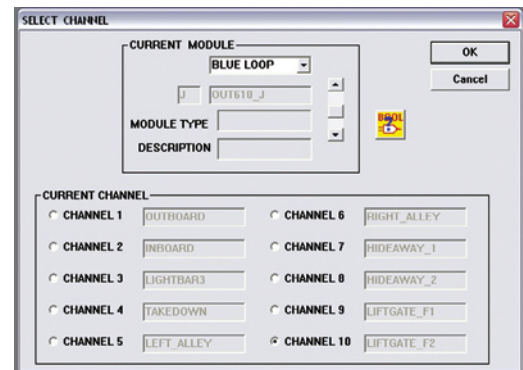
VIRTUALLY UNLIMITED NUMBER OF SWITCH PANELS AND MESSAGE DISPLAY MAY BE ADDED TO EACH VEHICLE.



6-BUTTON REAR SWITCH PANEL [CN6SWP]

## FULLY Integrated, FULLY Programmable

ALL added loads are continually monitored and controlled by CommandNET, including your constant hot items. This means that regardless of the vehicle's charging condition, if the voltage falls too low to support operations, CommandNET will shut down any controlled load (whether you are there or not), thus ensuring the vehicle is always ready for service.



For information on how to get CommandNET in your next command or response vehicle visit [www.getinthefastlane.com](http://www.getinthefastlane.com) or call 1-877-327-8526

